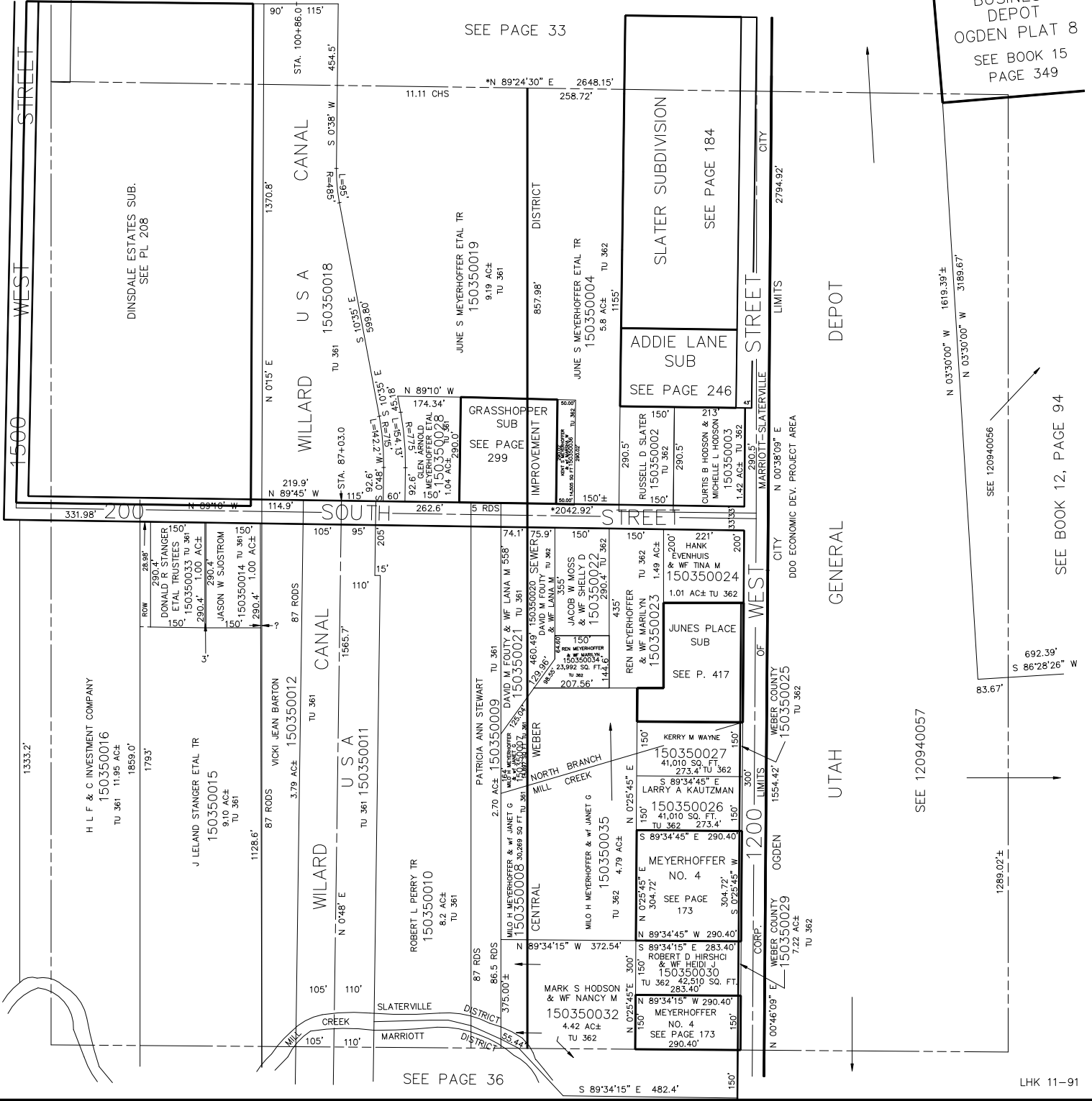


N.E. 1/4 OF
SECTION 13, T.6N., R.2W., S.L.B. & M.

IN OGDEN CITY AND MARRIOTT-SLATERVILLE CITY

TAXING UNIT: 358, 361, 362

SCALE 1" = 200'



SEE PAGE 38

15

SEE PAGE 33

BUSINESS DEPOT
OGDEN PLAT 8
SEE BOOK 15
PAGE 349

SEE BOOK 12, PAGE 94

SEE PAGE 36

LHK 11-91